

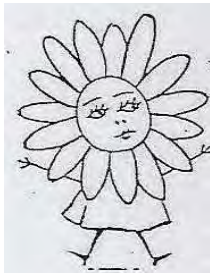
The Daisy Chain



Volume 31 Issue 4

December 2021

December 2021



Editor:	Terry Bukowski	(210) 385-2141	terrybukowski@yahoo.com
Editor	Glenda Kitto	(909) 599-0585	gkittoco@adelphia.net
Co-Editor:	Sandy Dorsey	(760) 731-6581	sandilee43@roadrunner.com
Chatti Patty	Pat Rather	(707) 996-8300	ratherpat@vom.com
Pattern Editor	Mary Hayden	(360) 642-2151	contrary128@gmail.com
Web Page:	Eric Silva		http://www.terrileedolls.com



To print the newsletter in color go to our Web Page: <https://terrileedolls.com>

In the box at the upper left called Subscriber Password type **Daisy Chain 2021 (You must capitalize the (D & C) our password is case sensitive)** Click on Login. Then click on the second box on the left in the upper menu, the box which says Current Issue. Scroll down to see the article and double click to enlarge the page. Click on download to print in color. **This will be our password for the year to make it easier for you to remember.**



Take a look at the Index now posted on our Web Page. We have divided it into three categories Accessories – Dolls – Clothing I hope it makes it easier to find the article you are looking for. And if you are like our staff it's how we organize our Terri lee literature library.



Did you notice the for sale pages are back. Please e-mail items you have for sale so we can share our duplicates.



Glenda Kitto has a web page with clothes and dolls for sale visit terrilee.net



COPYRIGHT

The Daisy Chain magazine and Little Mothers Talk is for personal use only and may not be sold in any form. Furthermore, all pictures and articles published are solely the property of the Daisy Chain and cannot be reproduced or sold without permission. © 2021 The Daisy Chain



Front Cover ~ Picture was taken from Jan Growden

**Articles for the March
2022 issue due Feb
15, 2022**

©2021 The Daisy Chain



On The Road Again

I sure didn't have to go far to find this collector. Sharon Griffiths. She was a big collector of Terri Lee until around 15 or so years ago. She had great Terri Lees and Jerri Lees and I was able to buy some when she stopped collecting. She had many other things to do like traveling, spending a lot of time with her grandchildren and building a new home. Unfortunately her husband passed away a few years ago and she recently retired from her job and moved into a beautiful town home in St. Charles, Missouri and now she is back with us. Also her daughter Renee has joined us also and she and Sharon attended the convention this year in Louisville. Sharon has found so many wonderful dolls in just the past few months including a wonderful red curtsy coat and hat and a beautiful painted Garden Party doll. Her main passion though is Western outfits. Her place is beautiful so if you are ever in the area you must stop in and see her collection, you will be amazed. Luckily I don't have far to travel to go there and it's great having someone close to play dolls with and have lunch.

Sue Munsell



LITTLE LADY TOILETRIES AD

By Terry Bukowski

In the Sep issue of the Daisy Chain Wanda Houck asked the question who is the doll in the Little Lady AD? Nancy Goldstein and her doll club quickly answered back they believe the doll to be a Mollye Goldman Cloth Doll. Nancy shared a picture of the doll.

I think it's a perfect match what do you think?



Mollye Goldman Cloth doll.

Jackie Ormes and Patty-Jo in the Spotlight

Cartoonist Jackie Ormes and her Patty-Jo creation are featured in an exciting exhibit of comics history, “Chicago: Where Comics Came To Life (1880-1960)”, at the Chicago Cultural Center, June 19, 2021 - January 9, 2022. Curated by cartoonist/designer Chris Ware and Chicago historian Tim Samuelson, the exhibit colorfully lays out the early history of comics and cartoons from Chicago’s many newspapers and its publishing industry. Jackie Ormes stands out in the exhibit—of course!—as the first African American woman cartoonist and, especially for us Terri Lee collectors, famously as the creator of the Patty-Jo cartoon character and doll. When Chris asked if I would participate in the exhibit, I didn’t hesitate. I was happy to write the wall text and to loan my doll. In fact, my Patty-Jo ended up having a whirlwind excursion since she was already in a different display at the Billy Ireland Cartoon Library and Museum, Ohio State University. As that exhibit closed, the Chicago art transporters picked her up and delivered her to the Cultural Center. By the time she gets back to me, in early 2022, she will have been “on tour” for two years! You can see dozens of photos from this wonderful exhibit by Google searching “Chicago: Where Comics Came to Life (1880 – 1960)”. In case you want to take up Chicago comics history where this one leaves off, there is a companion exhibit of contemporary cartoonists/comics at the Museum of Contemporary Art. They both run through January 9, 2022.



CHICAGO: Where Comics Came to Life (1880-1960)

CHICAGO: Where Comics Came to Life (1880-1960)

The Jackie Ormes section is nestled within a kind of labyrinth of decorative walls and displays. The curators were very obliging to keep my Patty-Jo doll far away from windows and UV light!

Close-up in the Ormes section



It was a pleasure to see that the curators' focus was Ormes's single panel cartoon *Patty-Jo 'n' Ginger*. But also it's rather surprising that her *Torchy in Heartbeats* color comic strip—which often draws more interest—doesn't appear here at all.

The two small framed cartoons are original Ormes *Patty-Jo 'n' Ginger* drawings loaned by collector and cartoonist Tim Jackson.

The other cartoons are facsimile blow-ups and are two of my favorites.

In one of them Ormes/Patty-Jo ironically refers to the tragic murder of Emmett Till, "I don't want to seem touchy on the subject. . .but, that new little white tea-kettle just whistled at me!" (October 8, 1955)

In the far right cartoon she promotes sales of the Terri Lee doll company's *Patty-Jo*, "But they're so much like me, Sis. . . Just s'pose an idea hits 'em . . .kinda frightenin' isn't it?????" (September 6, 1947)

And . . . *Patty-Jo* herself . . . center stage!

1948 DE LUXE WARDROBE

By Terry Bukowski & Glenda Kitto



LARGE CHEST WARDROBE

- 1030 Pinafore and panty.
- 1035 Sarong and sunbonnet.
- 1040 Slip.
- 1041 Panty.
- 1060 Coat, bonnet, muff, mittens, galoshes.
- 1065 Long formal coat.
- 1071 Scotch plaid skirt, flannel jacket, cap, shoulder bag with comb.
- 1074 Pique suit, straw hat.
- 1075 Ballet.
- 1080 Ice skating costume, ice skates with bells.
- 1081 Roller skating costumes and roller skates with bells.
- 1082 Majorette costume and hat.
- 1085 Cowgirl costume, silk blouse, cowgirl hat.
- 1086 Jodhpurs.
- 1087 Bridal costume.
- 1088 Bridesmaid's costume
- 1090 Snow outfit, jeans, white shirt, boots, mittens.
- 1096 Shoes and stockings.
- 4000 Skirt, blouse and sweater set.
- 4001 Swim suit, beach coat, sun suit.
- 4002 Silk bed jacket, nitie, bedroom slippers.
- 4006 Raincoat hat, gingham play dress.
- 4007 Peddle pushers, and shirt.

"Chest by Rohana"

1948 DE LUXE WARDROBE

By Glenda Kitto

Delux Wardrobe		Cost
1030	Pinafore/Panty	\$2.50
1035	Sarong and sunbonnet	\$1.95
1040	Slip	\$0.65
1041	Panty	\$0.40
1060	Coat bonnet Muff Mittens galoshes	\$9.95
1065	Long Formal Coat	\$7.50
1071	Scotch Plaid Skirt Flannel Jacket Cap Bad with comb	\$6.50
1074	Pique Suit straw hat	\$2.95
1075	Ballet	\$5.95
1080	Ice Skating	\$5.95
1081	Roller Skating	\$5.95
1082	Majorette/hat	\$5.95
1085	Cowgirl	\$6.95
1086	Jodhpurs	\$3.95
1087	Bridal Costume	\$5.95
1088	Bridesmaid	\$5.95
1090	Snow Suit	\$12.50
1096	shoes and socks	\$0.35
4000	Skirt Blouse Sweater Set	\$7.95
4001	Swim Suit/sunsuit/coat	\$3.25
4002	Silk Bed Jacket/nitie/slippers	\$3.50
4006	Raincoat/gingham dress	\$3.25
4007	Peddle Pushers	\$1.95
Clothing - 23 line items		\$111.75
Treasure Chest		\$29.95
Grand total Deluxe Wardrobe		\$141.70

What type of family would a lucky Little Mother come from if she/he received a complete DeLuxe Wardrobe for Christmas?

A very special family in deed...

In 1950 gasoline was \$.19/gallon;
a car was \$1500.00

The average salary for a Nurse was \$67.00/week. Average Salary per the census was listed as \$2200/yr.

With numbers like that I can understand why so few completely outfitted wardrobes may have been sold. Most would have sold item by item.

All Little Mothers and Little Fathers could dream and now in our adult life we can outfit that DeLuxe Wardrobe!



Wardrobe complete with clothing assembled by Sandra Dorsey in 1997

Fashion Wardrobe

Storage
Dec 2021

1948 DE LUXE WARDROBE

PINAFORE & PANTY #1030

By Terry Bukowski & Glenda Kitto

The Lincoln Nebraska Fashion Parade of 1948 offered a red dimity pinafore with fancy eyelet at the shoulder. This particular dotted material is rather rare. It's very likely that many different fabrics and trims were used.



MIP pinafore. Notice the early packaging. This pinafore has the loopy tag. The side bows are gone replaced with a bow coming from the back tying in the front. The pinafore comes with matching panties.



1948 DE LUXE WARDROBE

SARONG & SUNBONNET #1035

By Terry Bukowski
& Glenda Kitto



The Sarong first appeared in the 1948 Fashion Parade page 13 in the green and white stripe.



SARONG SUNSUIT and SUNBONNET — the gayest ever green and white stripes. Terri loves the perky, wide sarong bottom, and the cool bra top. Both tie with satin ribbons. The sunbonnet looks adorable on Terri. Complete, \$4.25. **SWIM SUIT and BEACH COAT** (not illustrated) Complete \$1.95.

The sarong is made up of three pieces, a bra, skirt, and

The bra ties in the back and has a ribbon that goes around Terri's neck.

The skirt is a wrap around and even forms panties. The bonnet five rows of stitching which helps it stand up.

Sandy Dorsey did a very detailed article in the Dec 2018 issue, for more information check it out.

1948 DE LUXE WARDROBE

SLIP AND PANTY #1040 & #1041

By Terry Bukowski
& Glenda Kitto



The diversity in Terri's lingerie makes every collector want to have her dolls correctly costumed.

The early panties are nylon. Early slips were a princess A-line with lace trim.

1948 DE LUXE WARDROBE

COAT, BONNET, MUFF, MITTENS, GALASHES #1060

By Terry Bukowski

& Glenda Kitto



Terri's wardrobe included the winter coat and bonnet, with accessories of a fur muff, felt mittens and fur trimmed galoshes. The coat and hat are hand tailored of Bontany flannel and lined. Notice the scallops on the bonnet edge. The coat has tiny buttons. The lace that protrudes between the bonnet and the brim is some of the oldest and fanciest used in Lincoln. The coat set came in a variety of colors; aqua, pink, red, yellow and white.

The early mittens were vey elaborate, there could be a many as 4 or 5 felt pieces making the design. Each mitten flowers matches the color of the coat. The fur muff is lined with taffeta and the felt galosher are hand sewn and trimmed with white lapin fur. Terri would wear these over her oil cloth shoes.

1948 DE LUXE WARDROBE

LONG FORMAL COAT #1065

By Terry Bukowski & Glenda Kitto



Made of pink Botay wool with blue taffeta lining, it has the loopy tag in both coat and bonnet. The coat bottom is a full half circle of fabric with intricate gathering at the waist, instead of tucks, to accommodate the material and help it hang gracefully. The lining for the back panel is one piece instead of four-gored as in the later, velveteen long coat. Since there is no plume on the bonnet, you can clearly see its amazing shape. The point extends a full 3 1/8 inches above Terri's hair.

It was sold with mittens with blue flowers and muff.



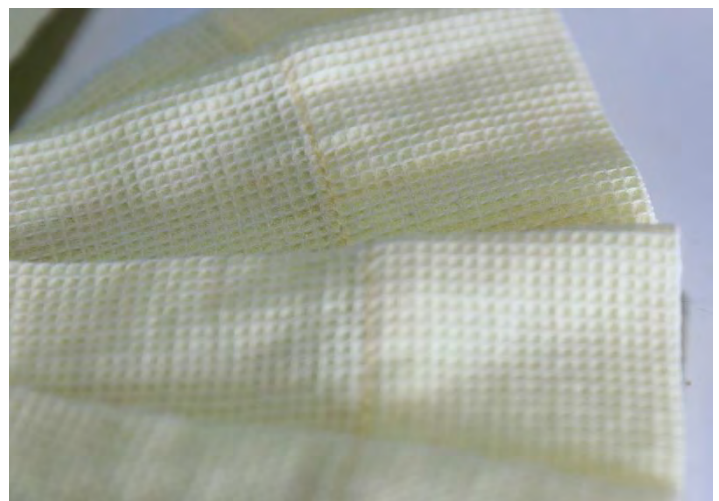
1948 DE LUXE WARDROBE

PIQUE SUIT, STRAW HAT #1074

By Terry Bukowski
& Glenda Kitto



The pique suit is made out of waffle pique' and was also called a Spring Suit. The outfit came in several pastel colors and a straw hat came with it. Terri's hat would have flowers on the brim. The jacket is double-breasted with 4 tiny pearly buttons. The buttons are positioned lower than the buttons on later pique' suits. The jacket closes with snaps.



The sleeves are trimmed at the edge with organdy eyelet.

Terri's skirt is pleated and has a very wide hem.

1948 DE LUXE WARDROBE

SCOTCH COSTUME # 1071

By Terry Bukowski & Glenda Kitto



The pleated skirt is made of all-wool Scotch plaid, in varying colors. The skirt has a wide band and is cut high in front. The jacket is a solid wool color and comes in green, red, and blue. The jacket has two covered buttons which match the skirt. Under the jacket is a dainty white batiste blouse. Her collar is round, and is trimmed with Val lace. Terri's Scotch kiltie cap is also made of the same fabric as the skirt.

Completing her outfit is her green felt shoulder strap purse, with a comb inside.

1948 DE LUXE WARDROBE – BALLET

#1075

By Terry Bukowski

The fashion parade from 1948 – 1951 advertised “My ballets, or formals if you wish to call them that, are made of Celanese taffeta and fine rayon net in beautiful colors, trimmed in glittering sequins. Over time the fine rayon net did not hold up and became limp. The pink ballet is a mint as when it left the factory, while the other two did not hold up as well.

The outfit is offered in the Retail Price List of 1951 as Ballet dress and panties, shoes, and flowers for hair at a price of \$5.95, the dressed doll retailed for \$16.95. the length of the ballet dress it was made for dancing.



1948 DE LUXE WARDROBE

ICE SKATING COSTUME, SKATES WITH BELLS # 1080

By Terry Bukowski
& Glenda Kitto



The skating outfit is made of taffeta brocade lined with pink satin

The outfit consisted of a short top, skirt, panties and a pointed hat that should be trimmed with tufts of fur.

White leatherette skates with bells complete the outfit.

1948 DE LUXE WARDROBE

ROLLER SKATING COSTUME, SKATES WITH BELLS # 1081

By Terry Bukowski & Glenda Kitto



This version of the roller skating costume is made of ninon, ruffled net underskirting holds the dress out. The outfit comes with a matching bonnet. There are examples of this outfit in both rayon “ninon” and cotton organdy.

Notice the flowers in the headpiece. A ribbon goes down the backside of the headpiece which helps keep it on Terri’s head.

The earlier outfits came with white oil cloth skates while new versions would have the metallic version in either silver, gold or pink depending on the color of the skating outfit.

1948 DE LUXE WARDROBE

MAJORETTE COSTUME AND HAT # 1082

By Terry Bukowski & Glenda Kitto



The first loopy tag majorette costume is fashioned of taffeta brocade similar to that used in the ice skating costumes. The outfit would come with the jacket top, skirt, panties, hat, white boots and baton.

The skirt is circular.

The hat that accompanies this outfit is an off-white felt and consisted of three pieces sewn together. It was taller in the front than the back and had an elastic chin strap and usually had a feather. Some had gold braiding across the bill.

We have only found the outfit in white with the red taffeta lining.

Accompanying the outfit are Terri's white boots and a baton.

1948 DE LUXE WARDROBE

COWGIRL COSTUME, SILK BLOUSE, HAT # 1085

By Terry Bukowski & Glenda Kitto



The early cowgirl outfits have printed blouses with wonderful little prints. The blouse is long sleeved with gathers at the top of the sleeves. It has pleats at the waistline.

The leather skirt is shorter than later skirts and has fringe at the bottom.

The vest also has fringe along the bottom with grommets.

The gauntlets have metal grommets which is slanted on the earlier versions and have fringe that matches the vest and skirt.

The felt cowboy hat is most noticeable and instantly recognized. It is a larger, softer hat with plastic lanyard around the brim,



Notice the boots with their stacked heels

1948 DE LUXE WARDROBE

JODHPURS # 1086

By Terry Bukowski, Glenda Kitto, Mary Weaver



The jodhpurs first called her “Riding Costme” in the 1949 Fashion Parade came with a shirt, jodhpus (The pants), belt with studded naiheads, cowgirl boots and hat. The outfit was only sold between 1948 – 1951.

The outfit is usually seen in tan, beige, or taupe famiy of colors, and grey. Resently Mary Weaver found one in red.

1948 DE LUXE WARDROBE

BRIDAL COSTUME # 1087

By Terry Bukowski & Glenda Kitto



The gown sold in the wardrobe has lace going down the front of the skirt. The fabric is a shimmering white ninon, a fabric so transparent that the gown needed a strapless under slip. The gown was advertised in the #2 LNFP from 1950. The picture did not change, but the descriptive text did. A sweeping veil of gossamer net is gathered at top of the veil. The veil is almost floor length has Val lace around the edges. Lily-of-the-valley flowers and ribbons are stapled to the front of the veil.

Satin slippers complete the bridal dress.

Close-up of the lace trim of nylon embroidery we have found two versions of the lace.



1948 DE LUXE WARDROBE

BRIDESMAID COSTUME # 1088

By Terry Bukowski



One Bridesmaid outfit accompanied the Terri Lee Brides of 1948 – 1951.

According to the 1948 Lincoln Nebraska *Fashion Parade* the dress is made of taffeta with ruffles, lace and a large frilly bonnet that looks as though it came from Paris. The bridesmaids dress differs from the earliest Garden Party dress by the ruffle which goes up in the front. This dress was offered in the November 1948 Jr. Magazine and came in yellow or blue. We also know came in pink. The bonnet is fragile and in the case of my doll has seen better days, compared to the doll on her left.



1948 DE LUXE WARDROBE

SNOW OUTFIT, JEANS, WHITE SHIRT, BOOTS, MITTENS # 1090

By Terry Bukowski

& Glenda Kitto



The outfit consists of a white shirt, rabbit fur jacket which is lined in the same cotton fabric as the pants, felt hat which is trimmed with rabbit fur, felt/rabbit fur mittens, blue cotton pants and felt boots. The taller boots were made especially for the Nanook outfit.

1948 DE LUXE WARDROBE

SHOES AND STOCKINGS #1096

By Terry Bukowski

& Glenda Kitto



White oilcloth shoes and soxs are the shoes that came on all the early dolls.

The shoes tie with a ribbon and have three scollops cut out on the top of the shoe.

There were two different styles the higher cut would be late Lincoln while the really early Shoes would be cut lower.

1948 DE LUXE WARDROBE

SKIRT, BLOUSE AND SWEATER SET #4000

By Terry Bukowski

& Glenda Kitto



The silk blouse is trimmed with Val lace on the collar, sleeves and down both sides of the front. There are two snap closures near the top of the neck and at the waist, the blouse is pleated to give it a more fitted look. The round collar and puffy sleeves were the look for a school girl in the 1950's. The pleated skirt is made of soft wool flannel and has wide pleates.

A cardigan sweater and beret accompany the set.

The sweater set is hand knitted, Terri's sweater has a round neck.

The skirt and sweater set come in various colors.



1948 DE LUXE WARDROBE

SWIM SUIT, BEACH COAT, SUN SUIT #4001

By Terry Bukowski
& Glenda Kitto



The first beach coat was made of cotton to match the swim suit offered and came in blue or red. The beach coat was monogrammed with TL and completed the swim outfit.

1948 DE LUXE WARDROBE

SWIM SUIT, BEACH COAT, SUN SUIT #4001

The sun suit is made of sheer white batiste, with lace ruffles and satin ribbons. The ribbons tie at the neck and on both sides. On the back side of the sun suit is three rows of lace. The ties are very dainty only 5/16" wide. There is only one seam at the crotch which makes this sun suit a very simple sewing project.



1948 DE LUXE WARDROBE

SILK BED JACKET, NIGHTIE, BEDROOM SLIPPERS #4002

By Terry Bukowski

& Glenda Kitto



The set includes a nightgown, bed jacket and bedroom slippers. The nightgown is batiste, has long sleeves, lace and satin ribbons. The bed jacket is silk crepe, comes in blue or pink. Notice the details the bed jacket has a yoke and the sleeves are set in. The bedroom slippers have doubled sided satin ribbons.

1948 DE LUXE WARDROBE

RAINCOAT, HAT, GINGHAM PLAY DRESS #4006

By Terry Bukowski & Glenda Kitto



Made of light weight plastic the rain coat over the years have become very fragile.

The early sets contained a bonnet style brim hat for Terri with multiple rows of stitching which gives it the strength to stand up and is finished off with pinked edges.

The coat has sewn in sleeves and the collar is pinked turned outward and sewn down in front. Sleeves are set in and the coat is finished with a ribbon tie.

1948 DE LUXE WARDROBE

RAINCOAT, HAT, GINGHAM PLAY DRESS #4006



The gingham play dress is made of cotton adorned with Val lace at the neckline and down the front. A ribbon ties at the waist. The dress has puffed sleeves.

The dress is found in many colors but ours has the loopy tag.

1948 DE LUXE WARDROBE

PEDAL PUSHERS, SHIRT #4007

By Terry Bukowski & Glenda Kitto



The pedal pushers are made of rayon and came in solid colors, Dot Grippers at the waist, with straight legs, there are pockets on each side and a seam sewn down the front and back of each leg.

The pockets are detailed with top stitching which you can see in the blue pair.

The pedal pushers came with a cotton shirt which was tucked into the pants.



Little Mother Sews a Pilgrim Hat for Jerri Lee

By Mary M. Hayden

In November 2007 I gave my pattern for a Terri Lee Pilgrim Hat, now it is Jerri's turn. Enjoy.

Materials:

¼ yard black wool felt
Small buckle for hat band
Thread

Instructions:

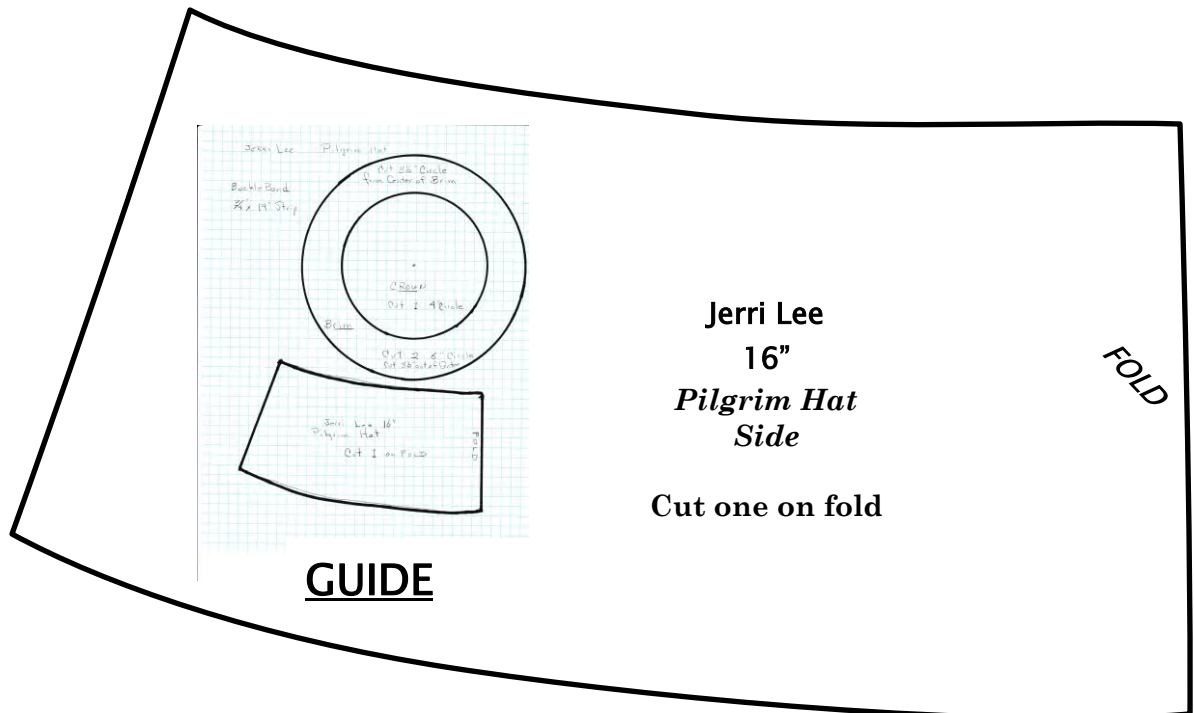
Make the Pattern:

Use the Guide as illustrated....

1. For the Brim, cut 2- 6" circles of black felt.
2. Cut 3 ½" inch circles out of the center of the 6" circles of black felt. (This will be tossed)
3. For the crown cut one 4" circle of black felt.
4. From the black felt cut the Hat Side from the pattern given.
5. Cut a ¾" wide by 14" long piece of felt for the hat band that fits the buckle you have chosen.

Sewing the Hat:

1. Stack the 2 brim pieces and stitch around them at ¼" intervals.
2. Sew the back seam of the Hat side.
3. Sew the crown to the hat side.
4. Sew the brim to the hat side.
5. Place buckle on the band and stitch on hat.



WANTED:



Leopard Chaps, and colored TL or JL Western outfit.

Deluxe Wardrobe check

Please contact Shron Griffiths (314) 276-1855



SALE:

If interest please call 405-340-3958, wanda.houck@sbcglobal.net - I will send pics if needed.
Call about the dolls.

1. Dress - white organdy, small lace trim, red ribbon ties - loopy tag - excellent \$95
2. Campfire outfit - skirt/shirt/cap/red scarf - emblem on both skirt and cap \$85
3. Cowgirl shirt - shocking lime green satin, repair on shoulder needs to be redone better, needs pressing \$40
4. Cowgirl vest and one gauntlet, white \$45
5. Gene Autry gun belt - has a big buckle so I think it's for GA , no gun \$40
6. Majorette outfit - white brocade satin pleated skirt (needs pressing) , red taffeta top, no panty - Hat is tall white felt with spidery gold all over, red feather (probably first majorette hat, hard to get). white boots Hat has it's elastic strap \$160
7. Majorette outfit - Maroon taffeta pleated skirt, gold top, gold panty, Maroon hat, yellow feather - no boots included. \$110
8. Velvet coat and hat - pretty wine color, lace inside hat, I put fur puffs back on - excellent \$90



1st heart fund pinafore with the loopy tag for sale 150.00 or best offer

MIB yellow garden party dress,hat,and slip 150.00.

Sue Munsell (314)878-7641

suemunsell@aol.com